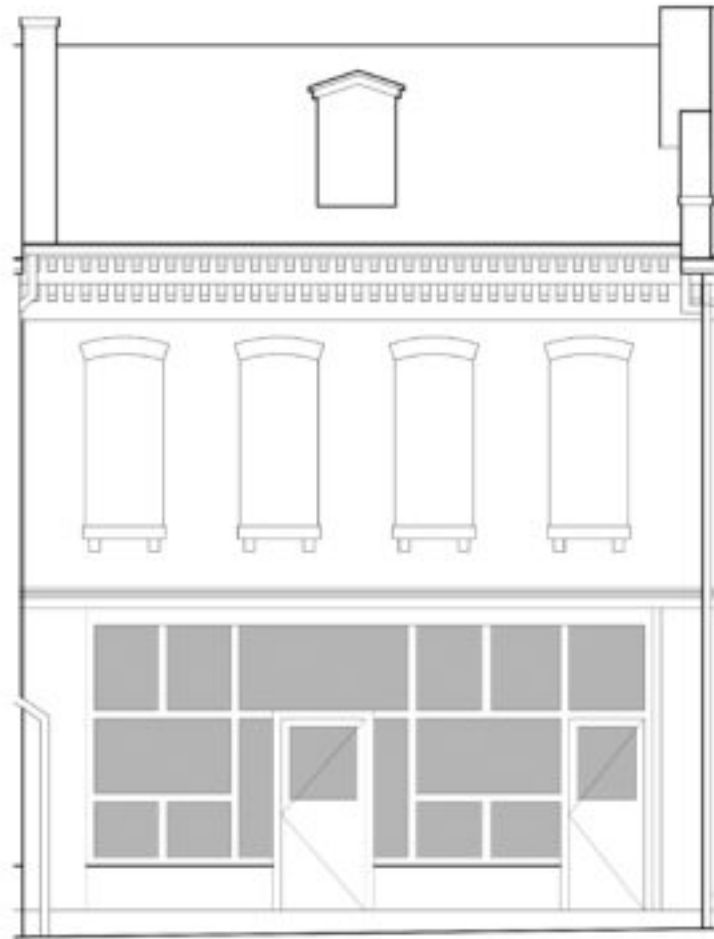


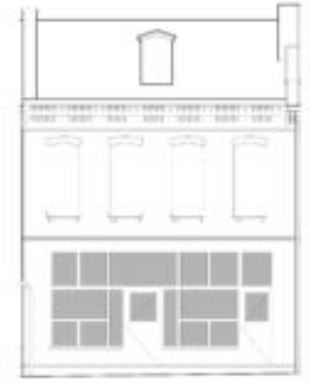


2635 Gravois Ave., St. Louis, MO 63118

Large historic storefront on busy street



2635 Gravois



2635 Gravois



Details

Property Type: Commercial
Neighborhood: Fox Park
Price: \$800
Parking Type: Off Street
Sq Ft: 1,598

Description

Be part of the exciting new commercial district forming at the intersection of Gravois & Jefferson. Located in the Fox Park Neighborhood of St. Louis,...

Location

