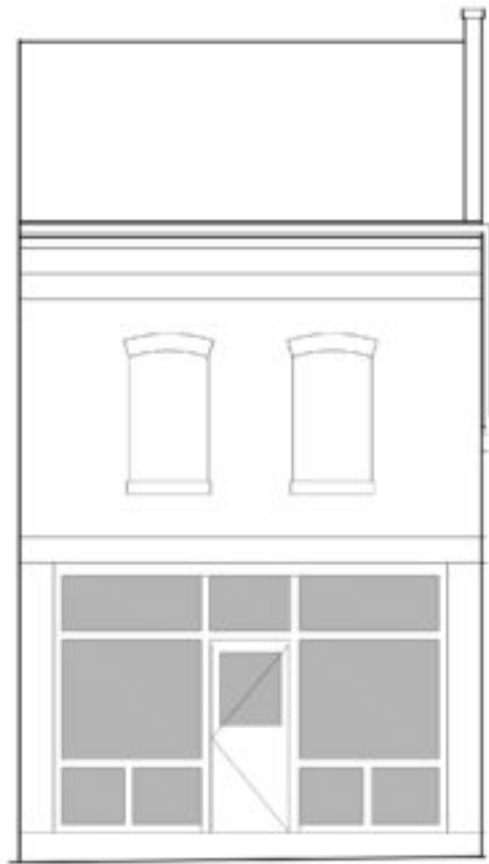




## 2641 Gravois Ave., St. Louis, MO 63118

Bargain commercial storefront space



# 2641 Gravois



2641 Gravois



### Details

Property Type: Commercial  
Neighborhood: Fox Park  
Price: \$600  
Parking Type: Off Street  
Sq Ft: 1,119

### Description

Be part of the exciting new commercial district forming at the intersection of Gravois & Jefferson. Located in the Fox Park Neighborhood of St. Louis,...

### Location

